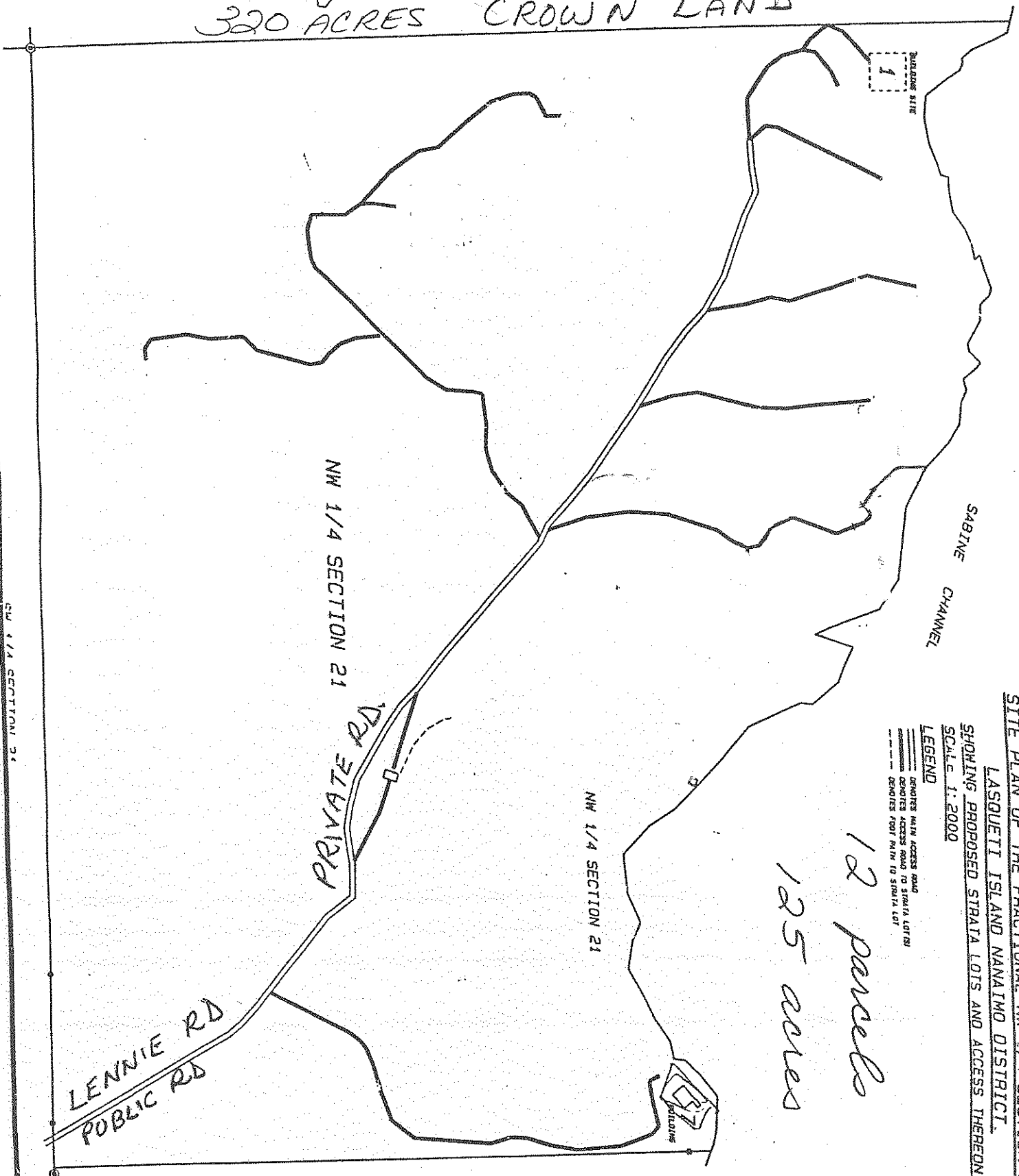


LAND LOCKED
FRACTIONAL NE 1/4 SECTION 28

320 ACRES CROWN LAND



SITE PLAN OF THE FRACTIONAL NW 1/4 SECTION 21,
LASQUETI ISLAND NANAIMO DISTRICT,
SHOWING PROPOSED STRAITS LOTS AND ACCESS THEREON.
SCALE: 1:2000

12 parcels
125 acres

LEGEND
 --- OPENERS WITH ACCESS ROAD
 --- OPENERS ACCESS ROAD TO STRAITS LOTS
 --- OPENERS FOOT PATH TO STRAITS LOT

FRACTIONAL NE 1/4 SECTION 21

SW 1/4 SECTION 24

SIMS ASSOCIATES
 LAND SURVEYING
 1000 WEST 10TH AVE.
 VANCOUVER, B.C. V6H 3G7
 DATE: 1/20/11
 DRAWN BY: J. SIMS
 CHECKED BY: J. SIMS

